



Professional Tyre Solutions

# Road Application

SPECIFICATION SHEET



Peace Of Mind

---

[www.alterever.com](http://www.alterever.com)

M17



ON



A rib pattern featuring longitudinal grooves that provide directionality and driving precision. Very versatile tyre, good performance in any application.

M19



ON



A rib pattern featuring four longitudinal lines that provide directional stability. Ideal pattern for trailer axles in applications that require regular wear and resistance to tyre overheating.

M12



ON

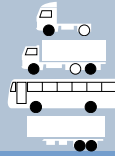


Specific tyre for low platform trailers use; rib pattern design with high mileage tread compound. Excellent stone ejection allows the casing to be kept in good conditions for retreading.

M1



ON

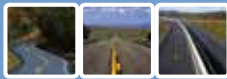


A rib pattern design suitable for long-haul roads and motorways. This very versatile tyre offers good performance in many applications.

M3A



ON



For trailers and semi-trailer rigs featuring 4 circumferential grooves, this tread design offers excellent performance on long-haul motorways.

M21



ON



For trailers and semi-trailer rigs featuring 4 circumferential grooves, this tread design offers excellent performance on long-haul motorways.

M14



ON



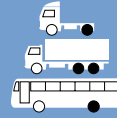
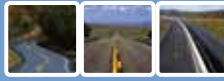
A rib pattern design suitable for urban busses with mileage durability and low noise. The tyre guarantees high resistance of the sidewalls to impacts, rubbings and abrasions.



M18



ON

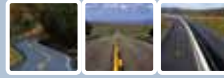


Block tread pattern that guarantees good traction and excellent grip. This tyre achieves excellent performance in terms of grip, long life and driving comfort.

M2 / M2A



ON

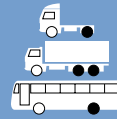
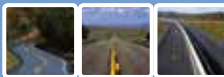


A drive axle tyre suitable for long-haul journeys and motorways, it offers excellent grip even on wet roads and slippery surfaces.

M20



ON

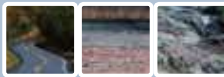


Drive pattern for use over medium and long distances. The block tread guarantees traction and regular wear. The depth of the pattern ensures excellent mileage.

M4A



ON/OFF

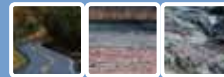


All-round ON/OFF tyre with rib pattern; solid shoulders for excellent stability even on difficult grounds.

M16



ON/OFF

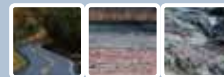


Tyre suitable for ON-OFF road uses. Ensures good traction on rough ground, resistance to abrasion and high reliability and efficiency.

M15



ON/OFF



Trailer pattern giving high stability under braking and high mileage above all on slippery surfaces. Block tread pattern and sculptured shoulders for better water drainage.

M5A



ON/OFF



Modern drive pattern design for ON/OFF use. New generation casing and belt plies. Outstanding high mileage.



## GAMME 2009 | 2009 RANGE

Dimension Size	Dessin Pattern	Indice de charge Load index	Code de vitesse Speed symbol
215/75 R17.5	M17	126/124	M
215/75 R17.5	M18	126/124	M
215/75 R17.5	M19	135/133	J
265/70 R19.5	M12	143/141	J
11 R22.5	M16	148/145	K
12 R22.5	M16	152/148	K
13 R22.5	M4A	154/150	K
13 R22.5	M5A	154/150	K
275/70 R22.5	M14	148/145 (151/148)	J (E)
315/60 R22.5	M20	152/148	L
385/65 R22.5	M3A	160	K
385/65 R22.5	M15	160	K
385/55 R22.5	M21	160 (158)	K (L)
315/70 R22.5	M1	152/148 (154/150)	M (L)
315/70 R22.5	M2	152/148 (154/150)	M (L)
295/80 R22.5	M1	152/148	M
295/80 R22.5	M2	152/148	M
315/80 R22.5	M1	154/150	M
315/80 R22.5	M2A	154/150	M
315/80 R22.5	M20	154/150	M

Code de vitesse   Speed symbol			Indice de charge   Load index								
	km/h	mph		kg	(lbs)		kg	(lbs)		kg	(lbs)
E	70	43	80	450	(990)	111	1.090	(2405)	142	2.650	(5840)
F	80	50	81	462	(1020)	112	1.120	(2470)	143	2.725	(6010)
J	100	62	82	475	(1045)	113	1.150	(2535)	144	2.800	(6175)
K	110	68	83	487	(1075)	114	1.180	(2600)	145	2.900	(6395)
L	120	75	84	500	(1100)	115	1.215	(2680)	146	3.000	(6615)
M	130	81	85	515	(1135)	116	1.250	(2755)	147	3.075	(6780)
N	140	87	86	530	(1170)	117	1.285	(2835)	148	3.150	(6945)
P	150	93	87	545	(1200)	118	1.320	(2910)	149	3.250	(7165)
Q	160	99	88	560	(1235)	119	1.360	(3000)	150	3.350	(7385)
R	170	106	89	580	(1280)	120	1.400	(3085)	151	3.450	(7605)
S	180	112	90	600	(1325)	121	1.450	(3195)	152	3.550	(7825)
T	190	118	91	615	(1355)	122	1.500	(3305)	153	3.650	(8045)
			92	630	(1390)	123	1.550	(3415)	154	3.750	(8265)
			93	650	(1435)	124	1.600	(3525)	155	3.875	(8545)
			94	670	(1475)	125	1.650	(3640)	156	4.000	(8820)
			95	690	(1520)	126	1.700	(3750)	157	4.125	(9095)
			96	710	(1565)	127	1.750	(3860)	158	4.250	(9370)
			97	730	(1610)	128	1.800	(3970)	159	4.375	(9645)
			98	750	(1655)	129	1.850	(4080)	160	4.500	(9920)
			99	775	(1710)	130	1.900	(4190)	161	4.625	(10195)
			100	800	(1765)	131	1.950	(4300)	162	4.750	(10470)
			101	825	(1820)	132	2.000	(4410)	163	4.875	(10725)
			102	850	(1875)	133	2.060	(4540)	164	5.000	(11025)
			103	875	(1930)	134	2.120	(4675)	165	5.150	(11355)
			104	900	(1985)	135	2.180	(4805)	166	5.300	(11685)
			105	925	(2040)	136	2.240	(4940)	167	5.450	(12015)
			106	950	(2095)	137	2.300	(5070)	168	5.600	(12345)
			107	975	(2150)	138	2.360	(5205)	169	5.800	(12785)
			108	1.000	(2205)	139	2.430	(5355)	170	6.000	(13230)
			109	1.030	(2270)	140	2.500	(5510)			
			110	1.060	(2335)	141	2.575	(5675)			



**MARANGONI**

THE OAKS • MAIN ROAD • GILBERDYKE • BROUGH • EAST YORKSHIRE • HU15 2UP

Telephone: +44 (0)1430 441360 • Fax: +44 (0)1430 441195 • info@alterever.com • www.alterever.com